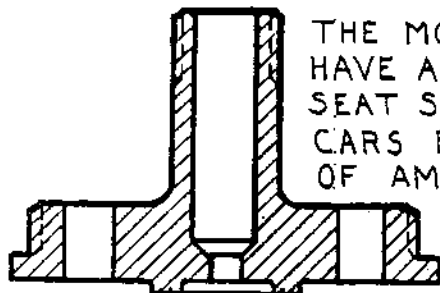
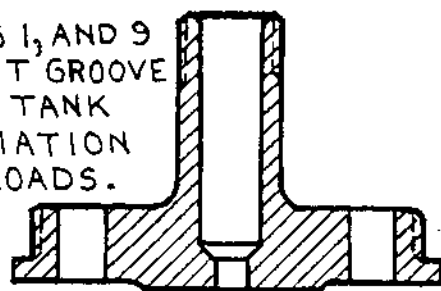


DESCRIPTION OF NO. 62B MGM TANK GAUGE BODY AND IT'S SEVERAL MODIFICATIONS

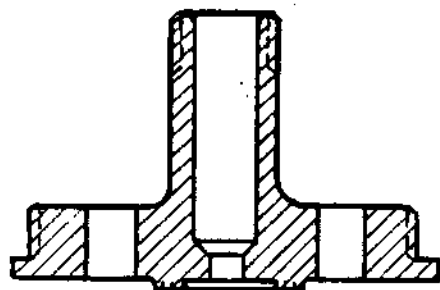


BODY (SPECIAL), PART 62B-14 (MODIFICATION 1), WITH MOUNTING HOLES ON $4\frac{1}{8}$ " BOLT CIRCLE.

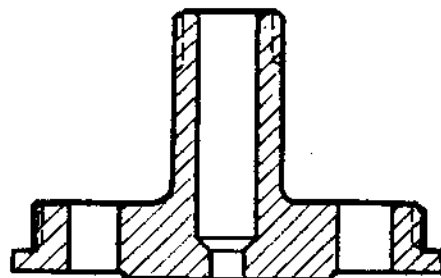
THE MODIFIED BODIES 1, AND 9 HAVE A TONGUE TO FIT GROOVE SEAT SPECIFIED FOR TANK CARS BY THE ASSOCIATION OF AMERICAN RAILROADS.



BODY (SPECIAL), PART 62B-14 (MODIFICATION 7). EQUIVALENT TO A $1\frac{1}{2}$ " 300 POUND AMERICAN STANDARD RAISED FACE FLANGE.



BODY (SPECIAL), PART 62B-14 (MODIFICATION 9), WITH MOUNTING HOLES ON $3\frac{1}{2}$ " BOLT CIRCLE.



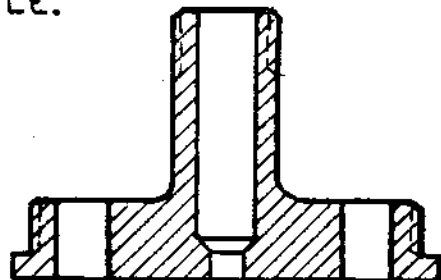
BODY (SPECIAL), PART 62B-14 (MODIFICATION 3), WITH $3\frac{1}{4}$ " DIAMETER RAISED FACE, AND MOUNTING HOLES ON $4\frac{1}{8}$ " BOLT CIRCLE.

IF SPECIAL BODY REQUIRES ADDITIONAL GAUGE ROD LENGTH, ADDING THE AMOUNT OF INCREASE TO DIMENSION C AUTOMATICALLY ADDS THE SAME AMOUNT TO DIMENSIONS A, AND TOTAL LENGTH.

BODIES (SPECIAL), PART 62B-14 (MODIFICATIONS 7, AND 11), REQUIRE THE USE OF HOUSING (SPECIAL), PART 62B-1 (MODIFICATION 4).

FLANGE GASKETS ARE NOT FURNISHED BY MGM FOR BODIES (SPECIAL), PART 62B-14 (MODIFICATION 3, 7 AND 11).

MGM WILL FURNISH ONE EXTRA DOME NUT, PART 62B-21, AND ONE EXTRA STUD GASKET, PART 62B-19 WITH EACH BODY (SPECIAL), PART 62B-14 (MODIFICATION 7, 9, OR 11).



BODY (SPECIAL), PART 62B-14 (MODIFICATION 11), WITH FULL FACE, AND MOUNTING HOLES ON $4\frac{1}{2}$ " BOLT CIRCLE.



METAL GOODS MANUFACTURING COMPANY

309 WEST HENSLEY BOULEVARD, BARTLESVILLE, OKLAHOMA 74003, U.S.A.

NO. 62B MGM TANK GAUGE

DATE 10-22-54

BY T.V. SHEET 10 (PART 1)

NO. 107

MOUNTING DIMENSIONS FOR NO.62B TANK GAUGE BODY AND ITS SEVERAL MODIFICATIONS

4- $\frac{13}{16}$ DIAM. HOLES
90° APART ON
 $4\frac{1}{8}$ " CIRCLE.

$\frac{1}{64}$ RADIUS
GROOVES

BODY (SPECIAL) PART 62B-14
(MODIFICATION 1).

4- $\frac{13}{16}$ DIAM. HOLES
90° APART ON
 $3\frac{1}{2}$ " CIRCLE

2.242-2.248
DIAMETER

1.502-1.508
DIAMETER

$\frac{1}{64}$ RADIUS
GROOVES

BODY (SPECIAL) PART 62B-14
(MODIFICATION 9).

4- $\frac{13}{16}$ DIAM. HOLES
90° APART ON
 $4\frac{1}{8}$ " CIRCLE.

$\frac{1}{16}$ " RAISED
FACE

$3\frac{1}{4}$ DIAM.

BODY (SPECIAL) PART 62B-14
(MODIFICATION 3).

4- $\frac{13}{16}$ DIAM. HOLES
90° APART ON
 $4\frac{1}{2}$ " CIRCLE.

FULL FACE

BODY (SPECIAL) PART 62B-14
(MODIFICATION 11). USE HOUSING
(SPECIAL) PART 62B-1 (MODIFICATION 4).

4- $\frac{13}{16}$ DIAM. HOLES
90° APART ON
 $4\frac{1}{2}$ " CIRCLE

$\frac{1}{16}$ RAISED FACE

$2\frac{7}{8}$ DIAM.

BODY (SPECIAL) PART 62B-14 (MODIFICATION 7).
USE HOUSING (SPECIAL) PART 62B-1 (MOD. 4).



METAL GOODS MANUFACTURING COMPANY

309 WEST HENSLEY BOULEVARD, BARTLESVILLE, OKLAHOMA 74003, U.S.A.

NO. 62B MGM TANK GAUGE

DATE 10-22-54

BY T.V. SHEET 10(PART 2)

NO. 107

REV. (6) 1-6-83 REDRAWN